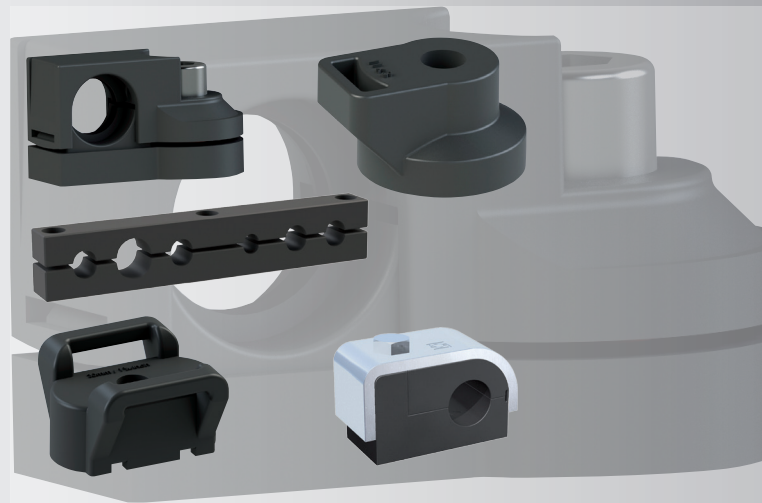


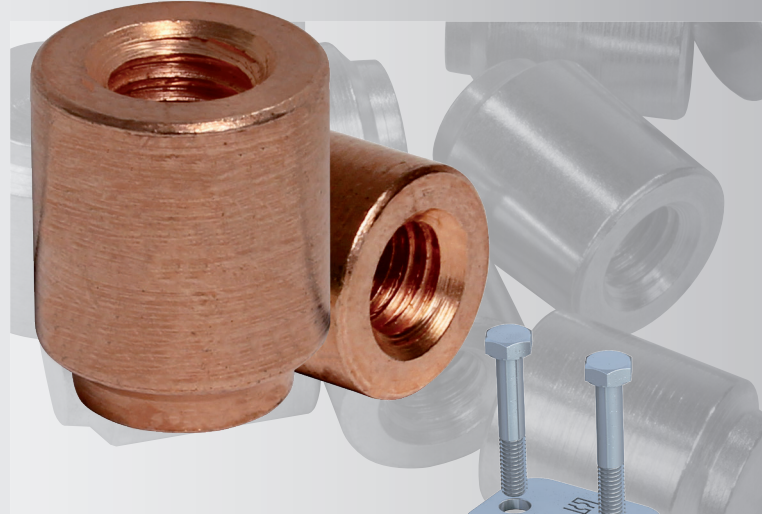


Local Solutions For Individual Customers Worldwide

Versatile combination
and adaptation options



STAUFF SWG Weld Stud –
developed for efficient assemblies



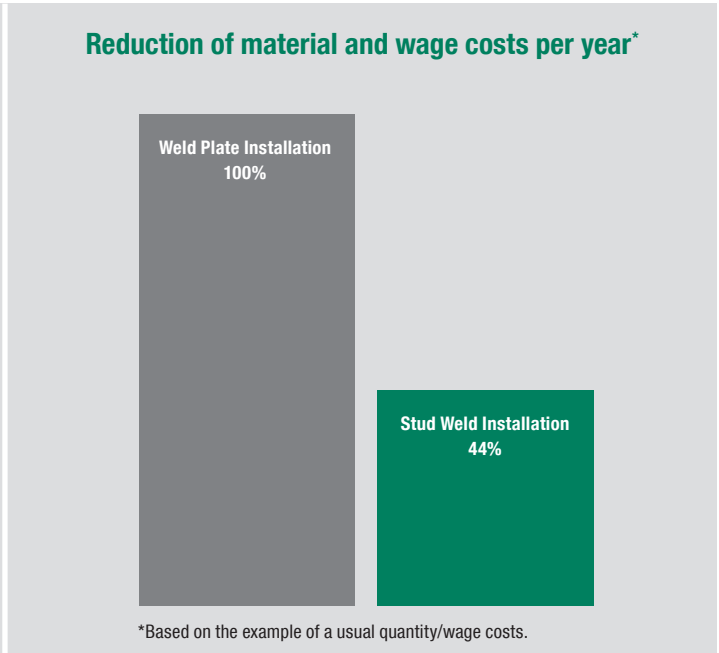
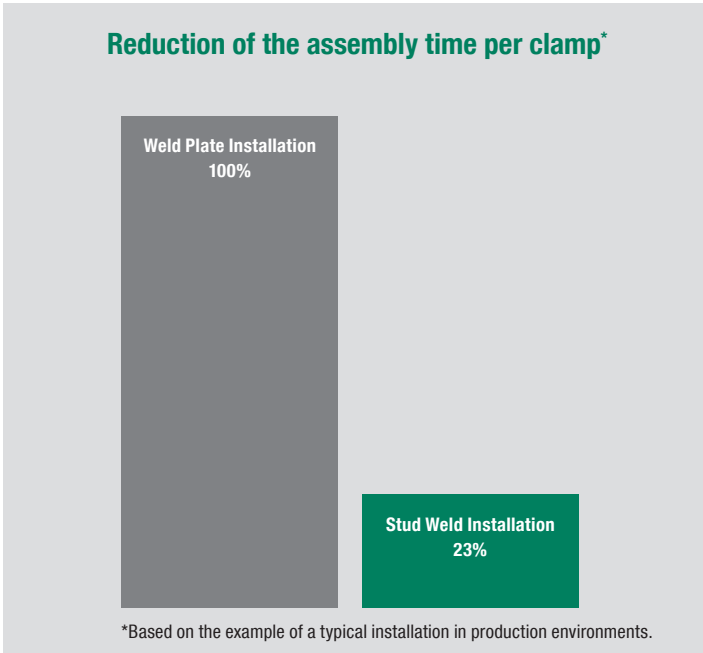
Designed for original STAUFF
Pipe, Tube, Hose and Cable Clamps



STAUFF SWG
Stud Welding System
for STAUFF Clamps
Product Overview

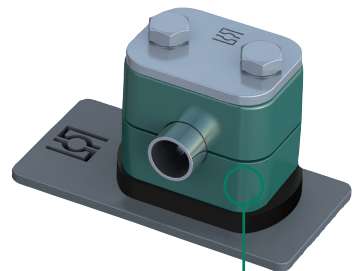
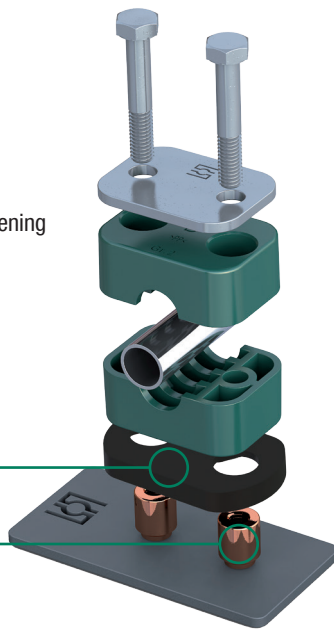
Characteristics of the STAUFF SWG Stud Welding System

- Developed and optimised to the functions of original STAUFF Clamps in the Standard Series (DIN 3015, Part 1)
- Only one STAUFF SWG Weld Stud covers all installation options
- Versatile combination and adaptation options for the STAUFF SWG System available (e.g. fastening elements for conduit hoses, clamping belts and cable ties)
- Significant time and cost savings by a quicker welding process and reduced rework on welding locations
- Material distortion reduced to a minimum through low thermal stress (particularly significant when handling thin metal sheets)
- High degree of safety and avoidance of corrosion due to a welded joint over the whole surface
- Lightweight and compact designed welding inverter
- By default no shielding gas or ceramic ferrule required
- Works without high-voltage current



STAUFF SWG Stud Welding System – by the inventor of the DIN 3015 STAUFF Clamp

- 1 Weld Stud and Distance Plate
- 2 Welding equipment
- 3 Accessories
- 4 Original STAUFF Clamps in the Standard Series as well as fastening elements for conduit hoses, clamping belts and cable ties



1 Distance Plate Type SWG-DIP

1 Weld Stud with Female Thread Type SWG-SF

4 Original STAUFF Clamps in different versions and special materials for Pipe, Tube, Hose and Cable Installation and other components.

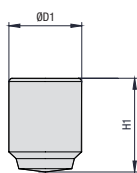


Installation Video

Convince yourself from the high productivity due to fast and easy handling and profit from significant time and cost savings.

www.stauff.com/en/swg

Weld Stud with Female Thread Type SWG-SF



Order Code

Weld Stud *SWG-SF*M6x11x14*W124

* Weld Stud with Female Thread **SWG-SF**

* Thread code Metric ISO thread **M6x11x14**
Unified coarse (UNC) thread **UNC1/4-20x11x14**

* Material code Steel 4.8 with galvanised copper coating C1E (DIN EN ISO 4042) **W124**

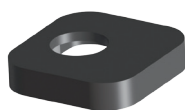
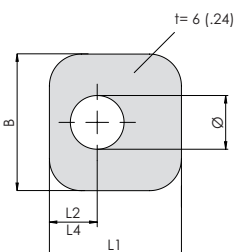
Group STAUFF	DIN	Dimensions (mm/in)			Order Codes (Standard Options)	Packaging Units (in PCS. / per Bag)
		Thread G	ØD1	H1		
1 ... 8	0 ... 8	M6	11	14	SWG-SF-M6x11x14-W124	100
			.43	.55		
		1/4-20 UNC	11	14	SWG-SF-UNC1/4-20x11x14-W124	100
			.43	.55		

Alternative materials are available upon request. Consult STAUFF for further information.

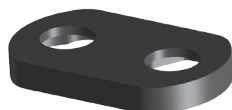
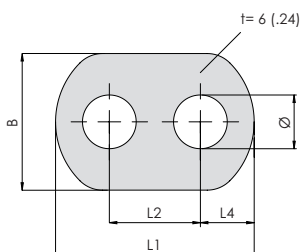
Maximum torque rating: 6 N-m / 4.43 ft-lb
Specific series can limit the torque additionally. In case of doubt, please contact STAUFF.

Distance Plate Type SWG-DIP

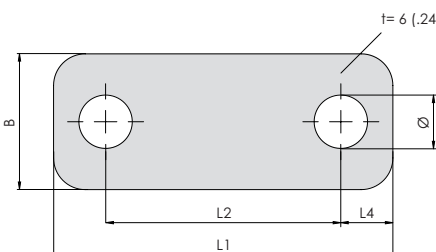
STAUFF Group 1



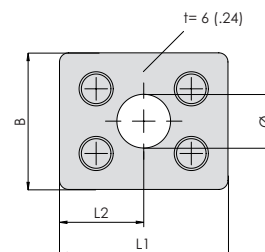
STAUFF Group 1A ... 3



STAUFF Group 4 ... 8



STAUFF Group 1D



Order Code

Distance Plate *SWG-DIP*2*PP-BK

* Distance Plate **SWG-DIP**

* STAUFF Group **2**

* Material code Polypropylene (Colour: Black) **PP-BK**

Alternative materials are available upon request.
Consult STAUFF for further information.

Group STAUFF	DIN	Pipe/Tube-Ø (mm/in)	Dimensions (mm/in)				Order Codes (Standard Options)	Packaging Units (in PCS. / per Bag)	
			Clamp Body	L1	L2 ±0,1(0,003)	L4			B
1	0	6 ... 12	29	10,5	10,5	30	11,8	SWG-DIP-1-PP-BK	25
		.2448	1.14	.41	.41	1.18	.46		
1A	1	6 ... 12	43,5	20	11,8	30	11,8	SWG-DIP-1A-PP-BK	25
		.2448	1.71	.79	.46	1.18	.46		
2	2	12,7 ... 18	48,5	26	11,3	30	11,8	SWG-DIP-2-PP-BK	25
		.5071	1.90	1.02	.44	1.18	.46		
3	3	19 ... 25,4	56,5	33	11,8	30	11,8	SWG-DIP-3-PP-BK	25
		.75 ... 1.00	2.22	1.30	.46	1.18	.46		
4	4	26,9 ... 32	62	40	11	30	11,8	SWG-DIP-4-PP-BK	25
		1.06 ... 1.26	2.44	1.57	.43	1.18	.46		
5	5	32 ... 42	75	52	11,5	30	11,8	SWG-DIP-5-PP-BK	25
		1.26 ... 1.65	2.95	2.05	.45	1.18	.46		
6	6	44,5 ... 54	88	66	11	30	11,8	SWG-DIP-6-PP-BK	25
		1.75 ... 2.12	3.46	2.60	.43	1.18	.46		
7	7	57,2 ... 76,1	121	94	13,5	30	11,8	SWG-DIP-7-PP-BK	10
		2.25 ... 3.00	4.76	3.70	.53	1.18	.46		
8	8	88,9 ... 102	147	120	13,5	30	11,8	SWG-DIP-8-PP-BK	10
		3.50 ... 4.00	5.78	4.72	.53	1.18	.46		
1D	1	6 ... 12	37	18,5	-	30	11,8	SWG-DIP-1D-PP-BK	10
		.2448	1.45	.73	-	1.18	.46		

Starterkit Type SWG-WI06-Starterkit



Includes

- 1 Weld Inverter - Type SWG-WI06
- 1 Weld Gun - Type SWG-WG
- 1 Ground Cable - Type SWG-GC
- 1 Distance Tube - Type DIT-SR6-SWG-WG30
- 5 Stud Retainer - Type SWG-SR6
- 1 Toolkit (Box Spanner/Hex Wrench)
- Operating Manual (EN/DE)

Order Code

SWG-WI06-Starterkit

①

① Type

Starterkit

SWG-WI06-Starterkit

Required Accessories

- Distance Adaptor (with DIN 3015 Clamp), Weld Stud

Weld Inverter Type SWG-WI06



Characteristics

- Works without high-voltage current
- No heavy extension cords required
- Extremely powerful and robust
- Compact in design
- Lightweight with only 18 kg / 40 lbs
- Welding current: 100 ... 650 A (stepless control)
- Welding time: 5 ... 200 ms (stepless control)
- Connection Cable: 3 m / 9.84 ft

Order Code

SWG-WI06

①

① Type

Weld Inverter

SWG-WI06

Technical Data

Primary Power

- 100 V to 240 V, 1 phase, 50/60 Hz, 16 AT

Primary Plug

- 16 A 2-pin grounded safety plug
(Plug Type F CEE 7/4)

IP Code

- IP 44 (also permits operation outdoors)

Ambient Temperature Limits

- ± 0 °C to +40 °C / ± 32 °F to +104 °F

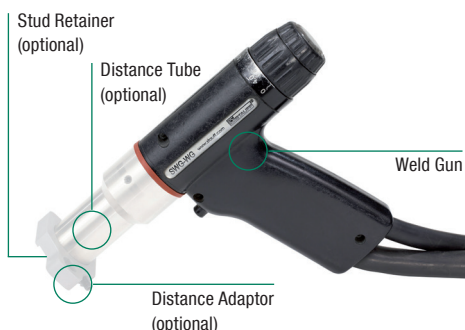
Dimension L x W x H

- 474 x 337 x 351 mm / 18.66 x 13.27 x 13.82 in

Required Accessories

- Weld Gun and Accessories, Ground Cable

Weld Gun - Arc Ignition Type SWG-WG



Characteristics

- Compact in design
- Lightweight with only 0,8 kg / 1.8 lbs
(without Cable)
- Ergonomic handle
- Comfortable setup
- Connection Cable: 5 m / 16.40 ft

Order Code

SWG-WG

①

① Type

Weld Gun

SWG-WG

Technical Data

Lift

- Adjustment range 3 mm / .11 in, lockable

Workplace noise level

- Up to 90 dB (A) may occur during welding

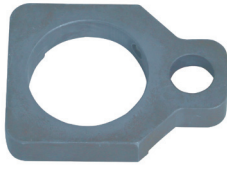
Dimension L x W x H

- 200 x 65 x 140 mm / 7.87 x 2.56 x 5.51 in
(without Cable, without Distance Tube)

Required Accessories

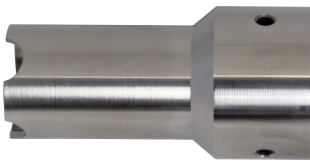
- Distance Adaptor (with DIN 3015 Clamp),
Distance Tube, Stud Retainer

Distance Adaptor Type SWG-AGS



Group	STAUFF	DIN	Adaptor	Order Codes
1A	1		AGS-1A for use with Distance Tube Type A	SWG-AGS-1A
2	2		AGS-2 for use with Distance Tube Type B	SWG-AGS-2
3	3		AGS-3 for use with Distance Tube Type B	SWG-AGS-3
4	4		AGS-4 for use with Distance Tube Type B	SWG-AGS-4
5	5		AGS-5 for use with Distance Tube Type B	SWG-AGS-5
6	6		AGS-6 for use with Distance Tube Type B	SWG-AGS-6
7	7		AGS-7 for use with Distance Tube Type B	SWG-AGS-7
8	8		AGS-8 for use with Distance Tube Type B	SWG-AGS-8

Distance Tube Type DIT-SR6-SWG-WG



Type	Assignment Distance Adaptor Type SWG-AGS	Order Codes
A	Type A for use with SWG-AGS-1A	DIT-SR6-SWG-WG25
B	Type B for use with all other SWG-AGS ...	DIT-SR6-SWG-WG30

Stud Retainer Type SWG-SR6



Order Code

SWG-SR6

①

① Type

Stud Retainer (5 PCS. per Bag)

SWG-SR6

Ground Cable Type SWG-GC

Order Code

SWG-GC

①

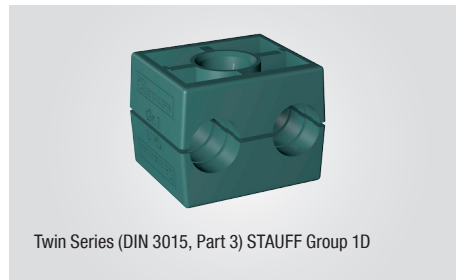
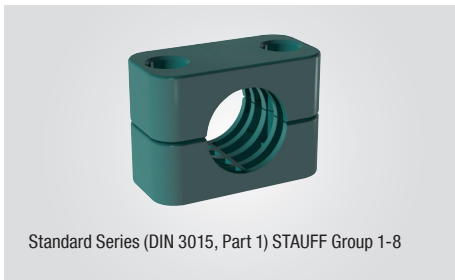
① Type

Ground Cable

SWG-GC

Original STAUFF Clamps for Quick, Easy and Safe Pipe, Tube, Hose and Cable Installation

Clamp bodies manufactured from thermoplastics (PP / PA), thermoplastic elastomers (SA), aluminium (AL) or special materials



Stud Welding System for Installation of STAUFF Special Clamps

