

Danfoss Hansen®

Flat Face Quick Disconnect Couplings

Exceptional **working pressure.**
High-level flow rate.

Exceeds ISO 16028 standards:

- 60% higher working pressures up to 400 bar
- Up to 74% higher flow rates, reducing energy loss.
- Allows for an increase in design versatility, one series can be used in a variety of different applications



Markets/Applications

- Hydraulic and fluid transfer
- Construction equipment
- Agricultural equipment
- Utility vehicles
- On-Highway vehicles
- Stationary in-plant hydraulics



Sells Against

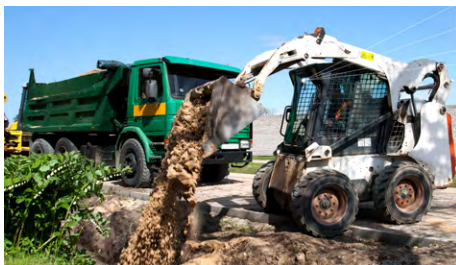
- Faster FFH Series
- Stucchi A Premier Series
- Stauff FF/FH Series
- DNP PLT4 Series
- Parker FEM Series
- CEJN X Series

Features

- **Lowest pressure drop** reduces energy consumption of overall hydraulic circuit
- **Exceptional corrosion resistance** of up to **1000 hours** due to an eco-friendly and nickel-free coating
- Can connect under (residual) pressure up to **350 bar with CUP** plug option

Order Fulfillment

- Standard Flat Face configurations and dust caps stocked in EMEA distribution center

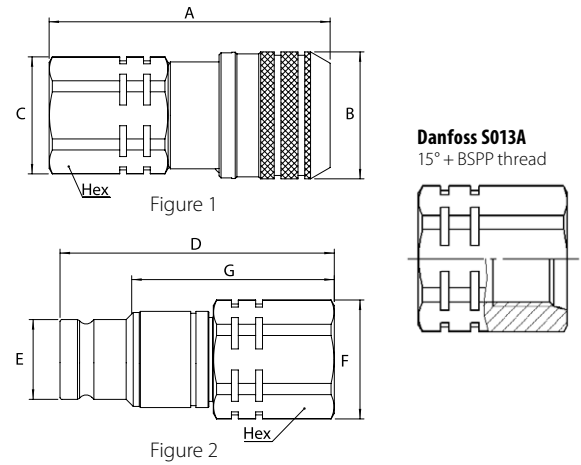
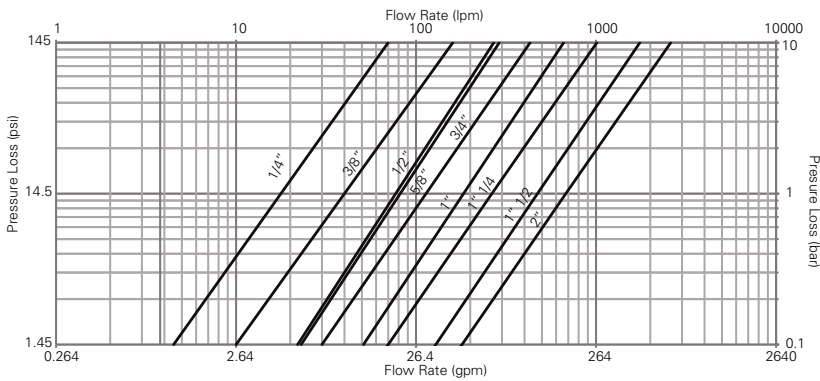


Physical Characteristics

ISO Size* (mm)	Coupling Size (in)	Maximum Operating Pressure						Minimum Burst Pressure						Rated Flow**		Fluid Loss	Air Inclusion	Force to Connect	
		Connected***		Plug/ Male Half		Socket/ Female Half		Connected		Plug/ Male Half		Socket/ Female Half		lpm	gpm	ml-cc.	ml-cc.	N	Lbs
6.3	¼	400	5,800	400	5,800	400	5,800	1,400	20,300	1,400	20,300	1,400	20,300	18	4.8	0.004	0.007	80	18.0
10.0	⅜	400	5,800	400	5,800	400	5,800	1,400	20,300	1,400	20,300	1,400	20,300	40	10.6	0.006	0.010	140	31.5
12.5	½	400	5,800	400	5,800	400	5,800	1,400	20,300	1,400	20,300	1,400	20,300	77	20.3	0.012	0.013	195	43.8
16.0	⅝	400	5,800	400	5,800	400	5,800	1,400	20,300	1,400	20,300	1,400	20,300	82	21.7	0.016	0.030	205	46.1
19.0	¾	400	5,800	400	5,800	400	5,800	1,300	18,850	1,300	18,850	1,400	20,300	114	30.1	0.034	0.015	215	48.3
25.0	1	400	5,800	400	5,800	400	5,800	1,260	18,270	1,260	18,270	1,260	18,270	184	48.6	0.032	0.033	260	58.5
-	1¼	300	4,350	300	4,350	300	4,350	900	13,050	900	13,050	900	13,050	260	68.7	0.170	0.053	200	45.0
-	1½	300	4,350	300	4,350	270	3,915	900	13,050	900	13,050	810	11,745	450	118.9	0.265	0.445	385	86.6
-	2"	300	4,350	300	4,350	225	3,260	900	13,050	900	13,050	675	9,790	700	184.9	0.390	0.260	375	84.3

* The ISO size corresponds to the internal diameter of the hose or the external diameter of the rigid tube (as defined in ISO 4397 Standard)
 ** Indicated values refer to a 1 bar/14.5 psi pressure drop
 *** 400 bar for static, steady or non-pulsed applications, 350 bar for ISO pressure rating for dynamic applications with moderate hydraulic shock

Flow Data



Dimensions (Socket/Female - BSPP)

Part Number (NBR)	Coupling Type	Body Size	Thread	Type	Fig.	Dimension A		Dimension B		Dimension C		Hex 1
						mm	(in)	mm	(in)	mm	(in)	
6FFS25BS	Socket/Female	1/4"	1/4-19	BSPP (Female)	2	54	(2,13)	27	(1,06)	24	(0,94)	22
10FFS37BS	Socket/Female	3/8"	3/8-19	BSPP (Female)	2	67,8	(2,67)	32	(1,26)	29,5	(1,16)	27
12FFS50BS	Socket/Female	1/2"	1/2-14	BSPP (Female)	2	77	(3,27)	38,2	(1,5)	39,5	(1,56)	36
16FFS75BS	Socket/Female	5/8"	3/4-14	BSPP (Female)	2	86	(3,39)	42,2	(1,66)	39,5	(1,56)	36
19FFS75BS	Socket/Female	3/4"	3/4-14	BSPP (Female)	2	96,6	(3,8)	46,2	(1,82)	46	(1,81)	42
25FFS100BS	Socket/Female	1"	1-11	BSPP (Female)	2	103,5	(4,07)	55,2	(2,17)	60	(2,17)	55

Dimensions (Plug/Male - BSPP)

Part Number (NBR)	Coupling Type	Body Size	Thread	Type	Fig.	Dimension D		Dimension E		Dimension F		Dimension G		Hex 2
						mm	(in)	mm	(in)	mm	(in)	mm	(in)	
6FFP25BS	Plug/Male	1/4"	1/4-19	BSPP (Female)	1	51	(2,01)	16,2	(0,64)	24	(0,94)	40,1	(1,58)	22
10FFP37BS	Plug/Male	3/8"	3/8-19	BSPP (Female)	1	65	(2,56)	19,7	(0,78)	29,5	(1,16)	49,7	(1,96)	27
12FFP50BS	Plug/Male	1/2"	1/2-14	BSPP (Female)	1	69	(2,71)	24,5	(0,96)	39,5	(1,56)	52	(2,05)	36
16FFP75BS	Plug/Male	5/8"	3/4-14	BSPP (Female)	1	72	(2,83)	24,5	(0,96)	39,5	(1,56)	55	(2,16)	36
19FFP75BS	Plug/Male	3/4"	3/4-14	BSPP (Female)	1	93,8	(3,69)	29,9	(1,18)	46	(1,81)	46	(2,84)	42
25FFP100BS	Plug/Male	1"	1-11	BSPP (Female)	1	104,6	(4,12)	36	(1,42)	60	(2,36)	81,7	(3,22)	55

Danfoss Power Solutions

Danfoss can accept no responsibility for possible errors in catalogs, brochures and other printed material. Danfoss reserves the right to alter its products without notice. This also applies to products already on order provided that such alterations can be made without sub sequential changes being necessary in specifications already agreed. All trademarks in this material are property of the respective companies. Danfoss and the Danfoss logotype are trademarks of Danfoss A/S. All rights reserved.